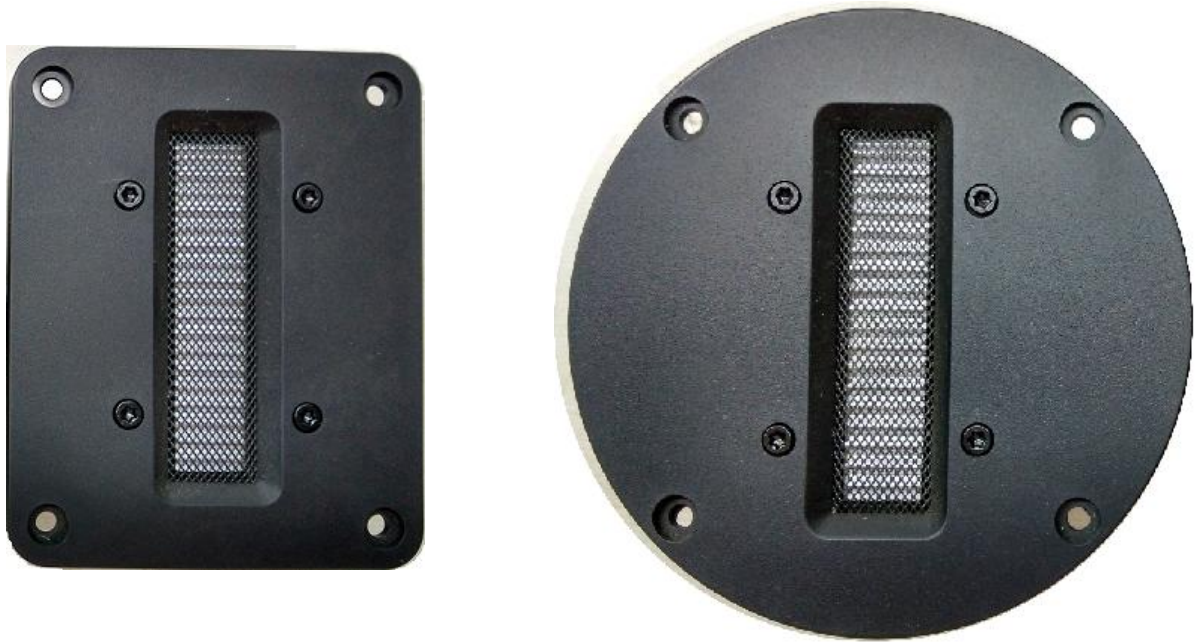


CQ66 New Type Ribbon Tweeter



Main Parameters:

Frequency Range	1800 – 40000Hz +/- 3dB
	1800 – 30000Hz +/- 2.5dB
THD	1800 – 10000Hz < 0.8%(95dB)
Sensitivity	88dB/1m*1W
Power Handling	15W
Impedance	6 Ohm(*)
Cross Point	>= 1800Hz

*: the impedance could be customized.



Dimensions:

Diaphragm Dimension	13.6mm * 66mm
Faceplate Dimension	Circle: Diameter 110mm
	Rectangle: 80mm * 100mm
Faceplate Thickness	5mm
Total Item Thickness	70mm
BackCap Dimension	50mm * 89mm
Weight	0.4 Kg

LMS Test Result:

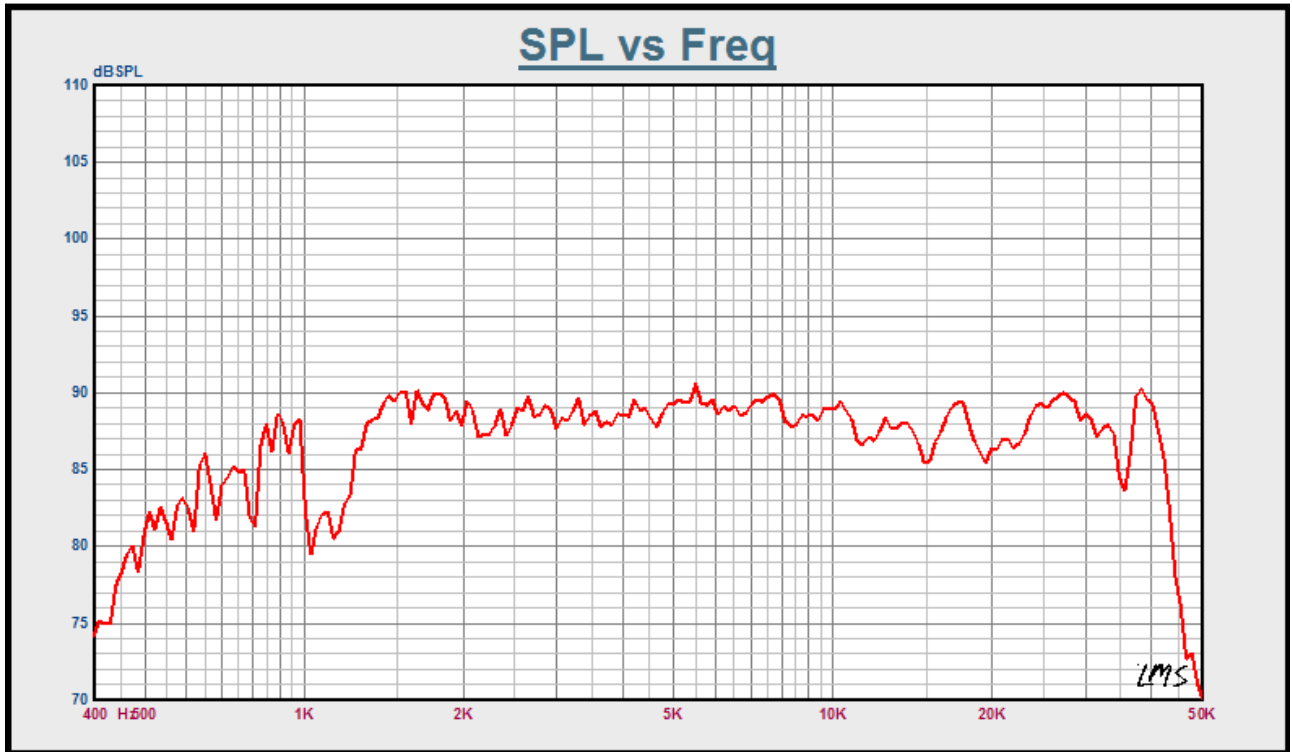


Fig 1. SPL Curve(No smooth)

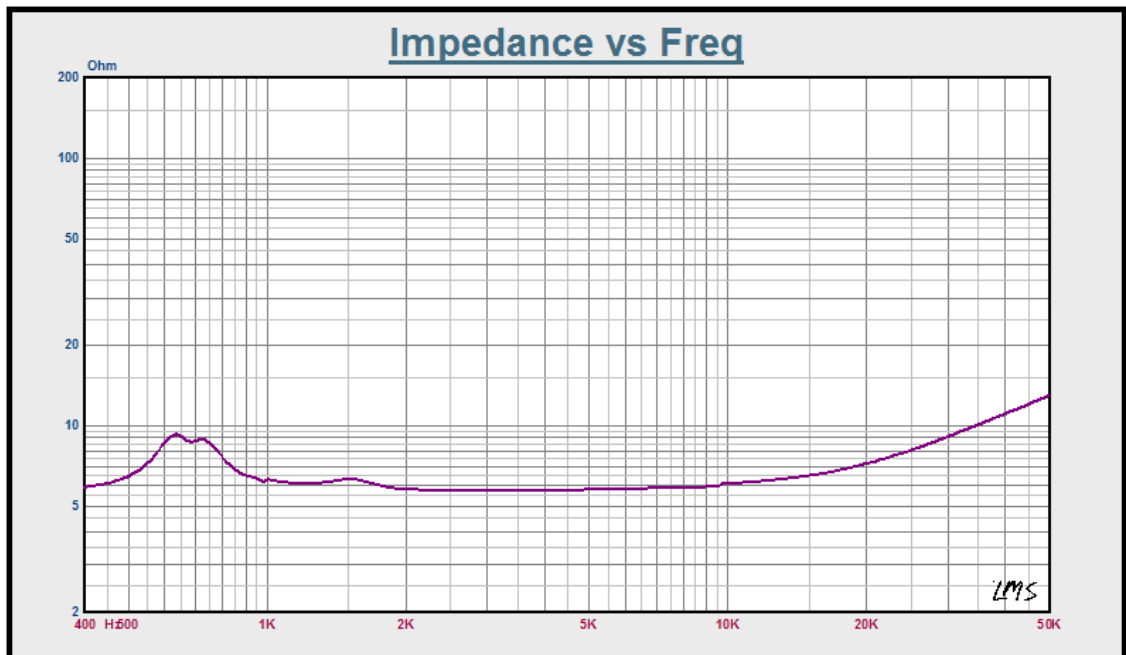


Fig 2. Impedance Curve

SoundCheck Test Result

Harmonics

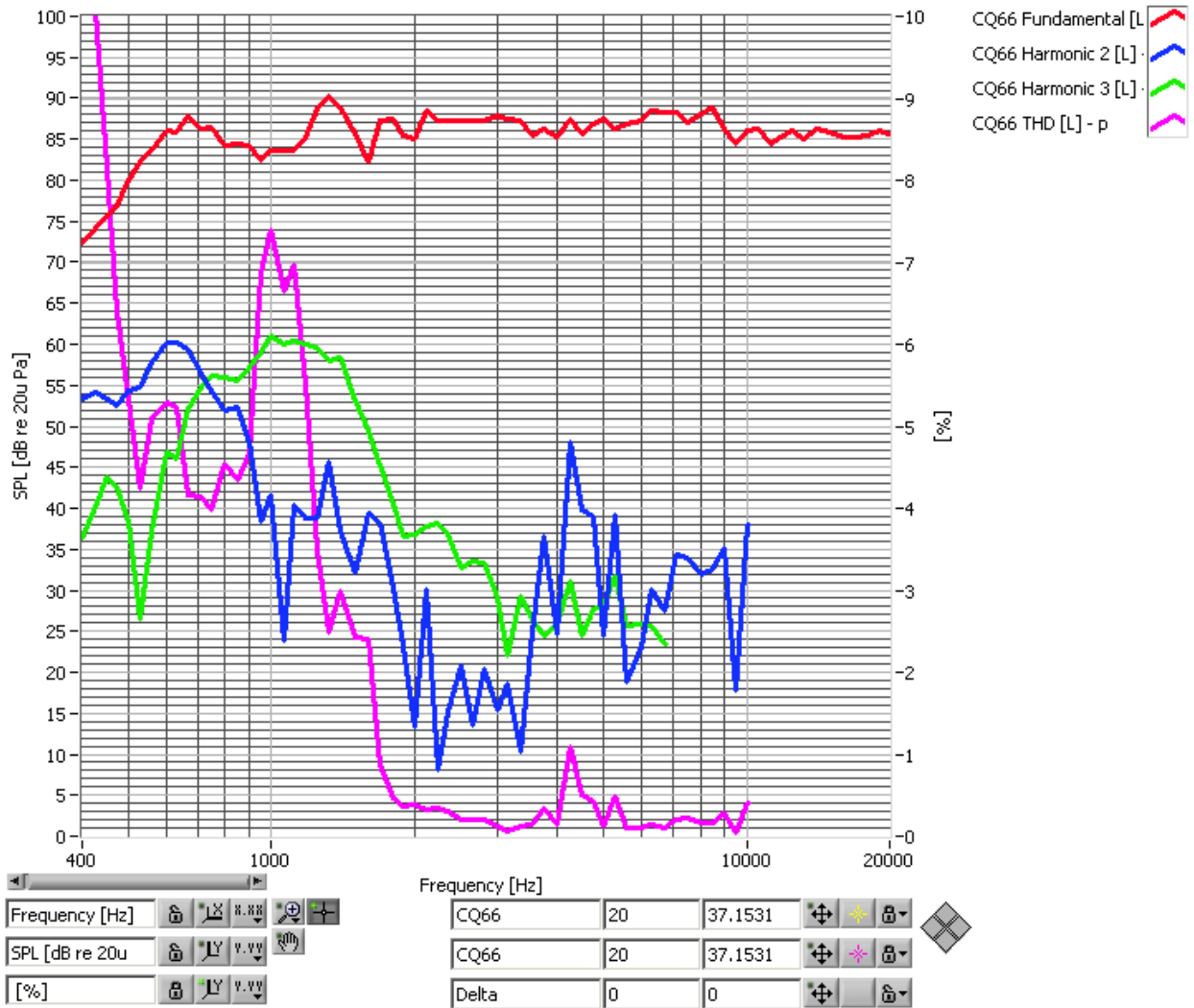


Fig 1. CQ66 SPL Curve

Harmonics

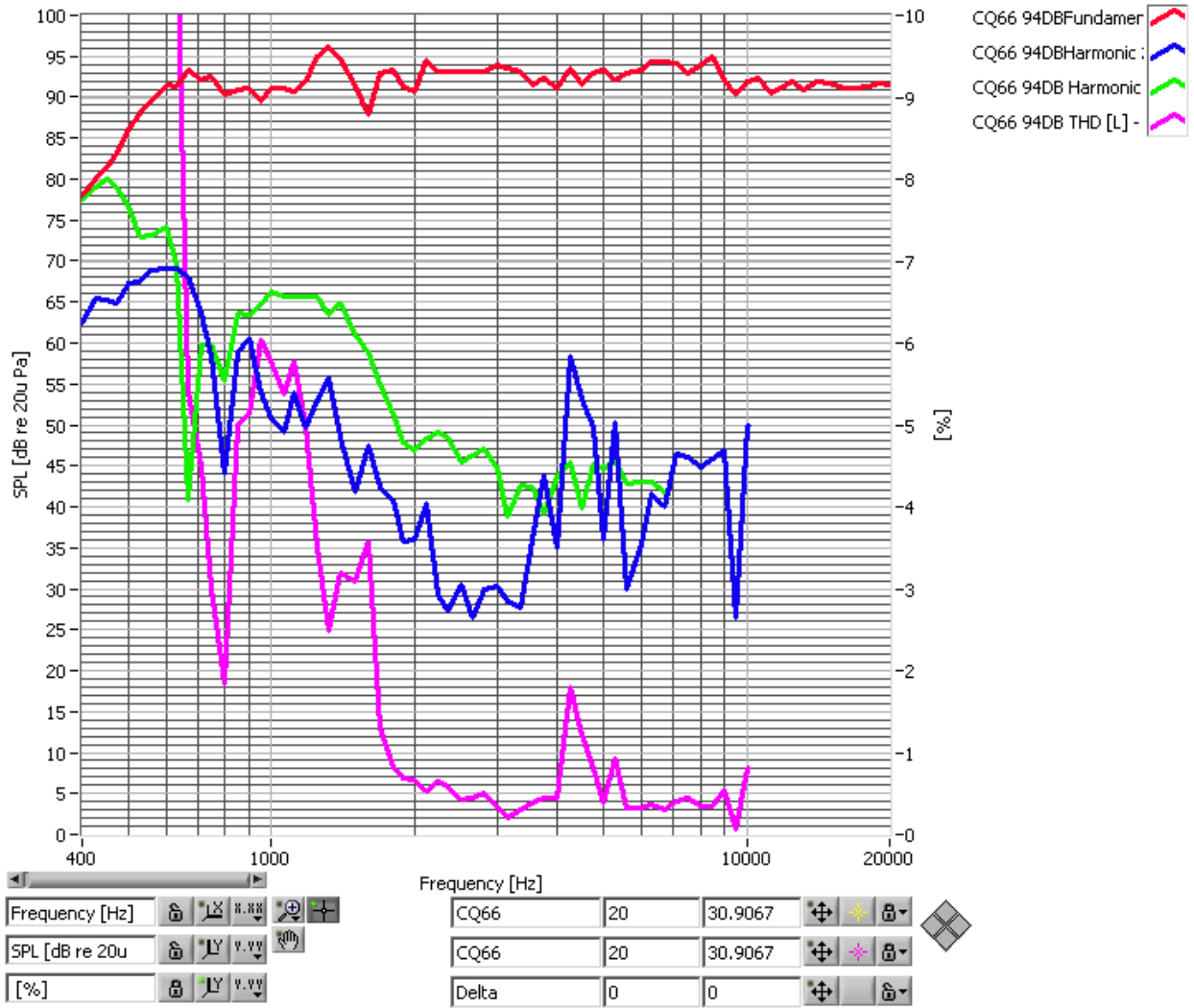


Fig 2. CQ66 THD Curve